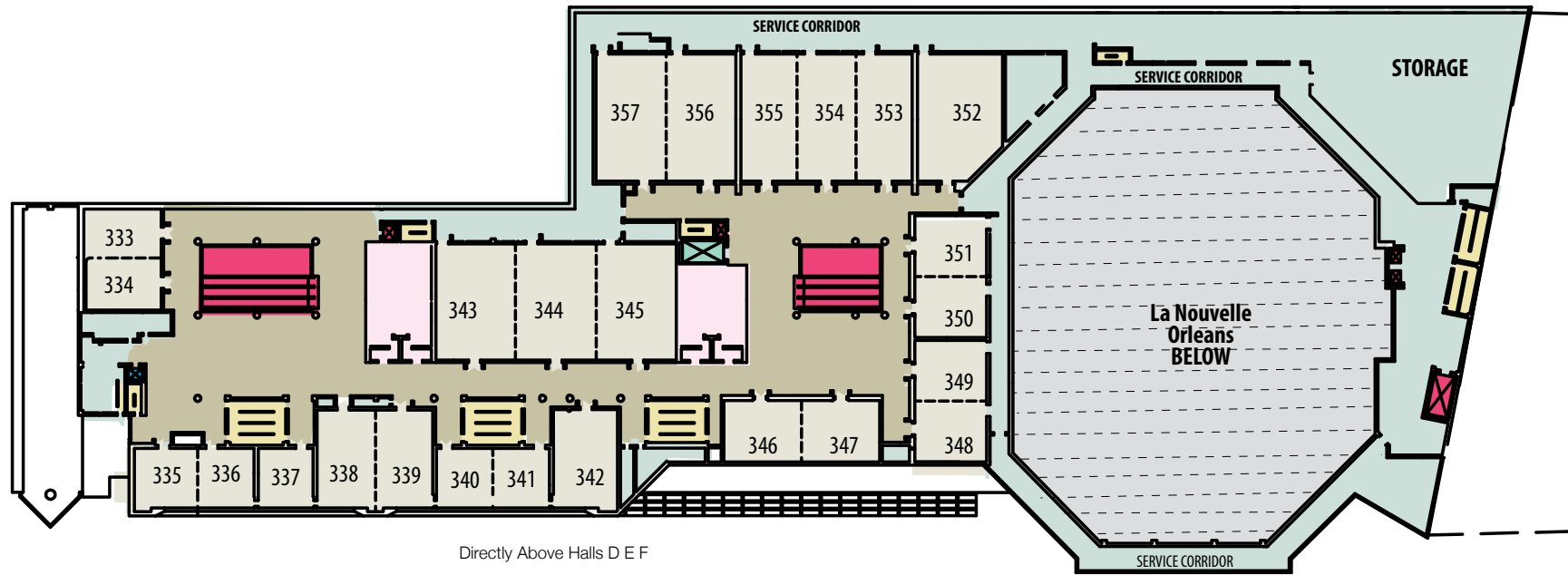


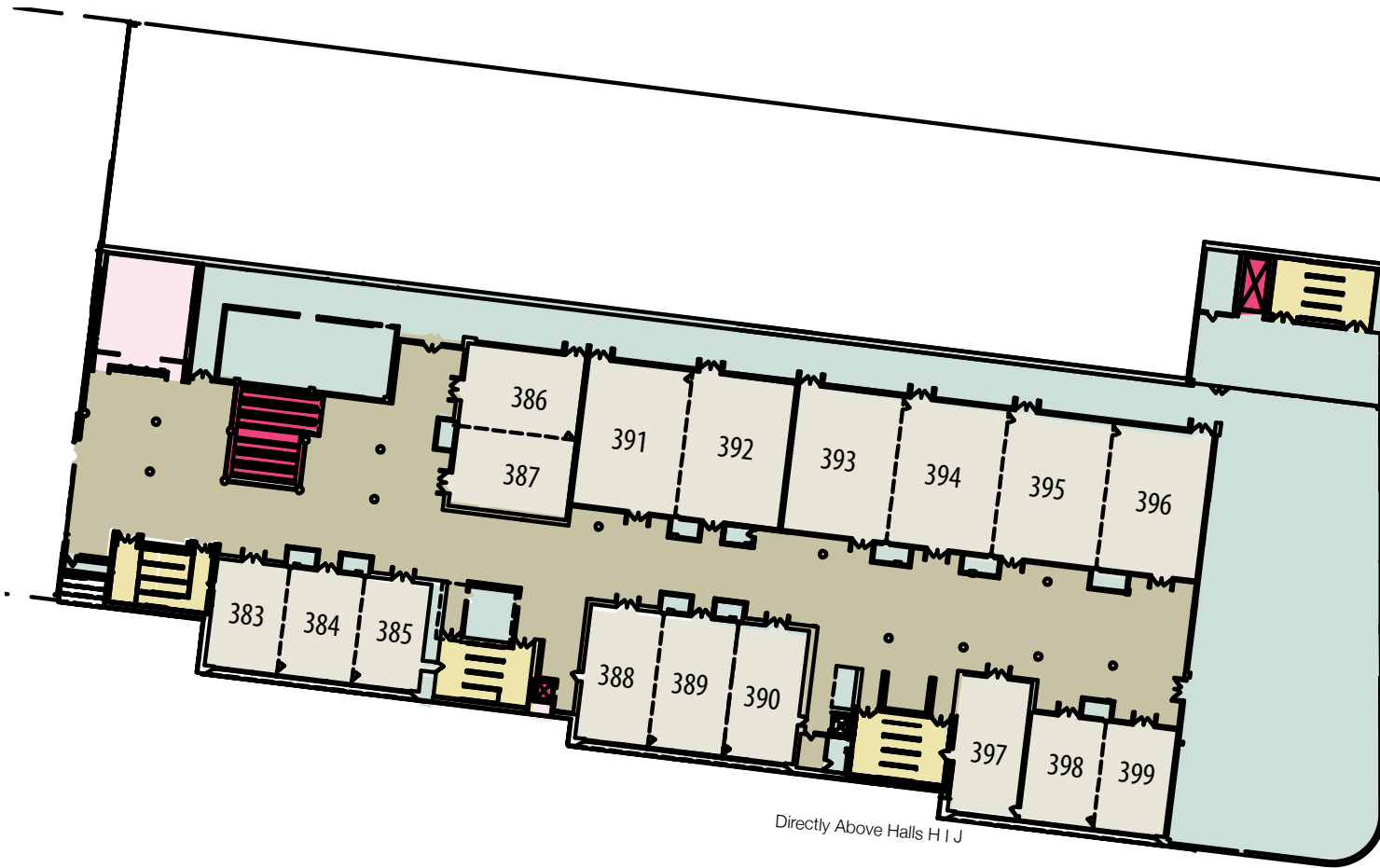
MEETING AREA THIRD LEVEL



MEETING ROOM SEATING CAPACITIES/COMBINATIONS

Room	Sq. Ft	Theater	Classroom	Banquet	Ceiling Height	Room	Sq. Ft	Theater	Classroom	Banquet	Ceiling Height	Room	Sq. Ft	Theater	Classroom	Banquet	Ceiling Height
*333	1,123	80	52	70	16'	340-341	1,830	182	108	100	16'	*350	1,083	98	60	70	16'
*334	1,127	80	52	70	16'	342	1,690	151	84	80	16'	*351	1,085	98	60	70	16'
333-334	2,250	200	90	150	16'	343	2,377	260	135	150	22'	350-351	2,168	195	84	130	16'
*335	1,060	98	60	50	16'	344	2,437	260	135	150	22'	352	2,756	298	140	170	16'
*336	906	72	60	50	16'	345	2,383	260	135	150	22'	353	1,972	204	90	100	19'
335-336	1,966	185	96	100	16'	343-345	7,197	840	378	470	22'	354	1,926	204	90	100	19'
*337	911	72	60	50	16'	346	1,267	115	36	80	19'	355	1,972	204	90	100	19'
338	1,433	144	84	80	16'	347	1,267	115	36	80	19'	353-355	5,870	650	288	310	19'
339	1,439	144	84	80	16'	346-347	2,534	230	117	170	19'	356	2,391	246	120	140	19'
338-339	2,872	324	153	160	16'	*348	1,080	98	60	70	16'	357	2,437	246	120	140	19'
*340	916	72	60	50	16'	*349	1,083	98	60	70	16'	356-357	4,828	500	228	300	19'
*341	914	72	60	50	16'	348-349	2,163	195	84	130	16'						

Classroom set-ups are 6'x18" tables with 3 seats per table. Banquet capacities are set at 66" rounds of 10.



- Business Center
- Medical / First Aid
- Lobby / Public Areas
- Service Areas
- Stairs / Emergency Exits
- Dock J Security Checkpoint
- Restrooms
- Freight Elevators
- ATMs
- Concessions
- Passenger Elevators / Escalators
- Show / Ticket Offices

EXHIBIT HALL CEILING HEIGHTS

- Halls A-E, G-J:
27' minimum under service ways, 59' to truss peaks, 65' to roof peak
- Hall F: 37' minimum
- Halls E, F: 26'
- Halls G, H, I-1, J: 24'

MEETING ROOM SEATING CAPACITIES/COMBINATIONS

Room	Sq. Ft	Theater	Classroom	Banquet	Ceiling Height	Room	Sq. Ft	Theater	Classroom	Banquet	Ceiling Height	Room	Sq. Ft	Theater	Classroom	Banquet	Ceiling Height
383	1,245	138	72	70	18'	389	1,607	179	93	80	18'	395	2,481	276	144	130	18'
384	1,287	143	75	70	18'	390	1,576	175	93	80	18'	396	2,373	264	141	130	18'
*385	1,159	129	66	60	18'	388-390	4,746	527	279	250	18'	393-396	9,806	1090	576	510	18'
383-385	3,691	410	216	200	18'	391	2,471	275	144	130	18'	397	1,494	166	87	80	17'
386	1,485	165	87	80	18'	392	2,491	277	147	130	18'	398	1,280	142	75	70	18'
387	1,419	158	84	70	18'	391-392	4,962	551	291	260	18'	399	1,245	138	72	70	18'
386-387	2,904	323	171	150	18'	393	2,476	275	144	130	18'	398-399	2,525	281	147	130	18'
388	1,563	174	93	80	18'	394	2,476	275	144	130	18'	* Indicates rooms with less than 1,200 sq. Ft.					